

# HOUSTON, TX DOMINICAN REPUBLIC



FREQUENCY
Weekly
— Southbound
— Northbound

## SOUTHBOUND

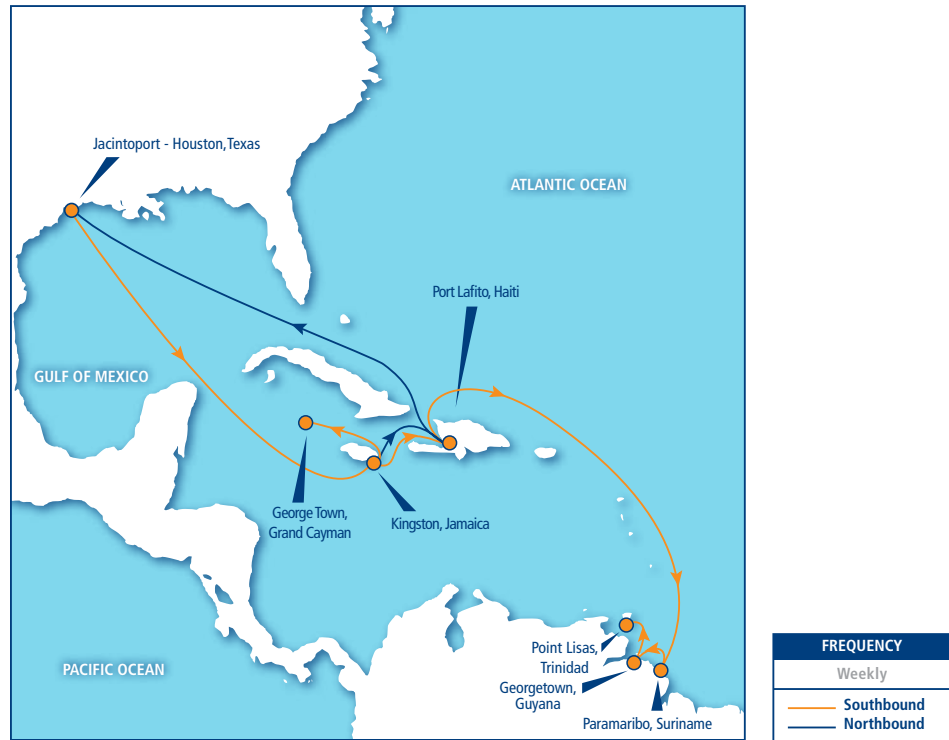
FROM HOUSTON, TEXAS	DELIVERY CUT-OFF	SAIL DAY	ARRIVAL	AVAILABLE	TOTAL TRANSIT TIME
To Rio Haina, Dominican Rep.	Thursday	Friday	Tuesday	Tuesday	11 Days
To Puerto Plata, Dominican Rep.	Thursday	Friday	Wednesday	Wednesday	12 Days

## NORTHBOUND

TO HOUSTON, TEXAS	DELIVERY CUT-OFF	SAIL DAY	ARRIVAL	AVAILABLE	TOTAL TRANSIT TIME
From Rio Haina, Dominican Rep.	Monday	Tuesday	Wednesday	Thursday	15 Days

- . Lift-On/Lift-Off Service
- . Fast Sea Transit Times
- . Intermodal/Overland Service to Inland Destinations in the United States

# HOUSTON, TX EASTERN CARIBBEAN



## SOUTHBOUND

FROM HOUSTON, TEXAS	DELIVERY CUT-OFF	SAIL DAY	ARRIVAL	AVAILABLE	TOTAL TRANSIT TIME
To Kingston, Jamaica	Thursday	Friday	Wednesday	Thursday	5 Days
To Port Lafito, Haiti	Thursday	Friday	Wednesday	Wednesday	12 Days
To George Town, Grand Cayman	Thursday	Friday	Thursday	Thursday	13 Days
To Paramaribo, Suriname	Thursday	Friday	Monday	Monday	17 Days
To Georgetown, Guyana	Thursday	Friday	Tuesday	Tuesday	18 Days
To Point Lisas, Trinidad	Thursday	Friday	Tuesday	Tuesday	18 Days

## NORTHBOUND

TO HOUSTON, TEXAS	DELIVERY CUT-OFF	SAIL DAY	ARRIVAL	AVAILABLE	TOTAL TRANSIT TIME
From Kingston, Jamaica	Tuesday	Wednesday	Wednesday	Thursday	7 Days
From Port Lafito, Haiti	Tuesday	Wednesday	Wednesday	Thursday	14 Days

- . Lift-On/Lift-Off Service
- . Fast Sea Transit Times
- . Intermodal/Overland Services to/from cities in El Salvador, Guatemala, Honduras and Nicaragua
- . Intermodal/Overland Services from cities in the United States of America and Canada
- . Through Service and Bills of Lading between other countries, ports and cities within the Seaboard Network

# HOUSTON, TX

## SOUTH CENTRAL AMERICA



### SOUTHBOUND

FROM HOUSTON, TEXAS	DELIVERY CUT-OFF	SAIL DAY	ARRIVAL	AVAILABLE	TOTAL TRANSIT TIME
To Manzanillo, Panama	Thursday	Friday	Tuesday	Tuesday	11 Days
To Puerto Moin, Costa Rica	Thursday	Friday	Wednesday	Wednesday	12 Days

### NORTHBOUND

TO HOUSTON, TEXAS	DELIVERY CUT-OFF	SAIL DAY	ARRIVAL	AVAILABLE	TOTAL TRANSIT TIME
From Puerto Moin, Costa Rica	Tuesday	Wednesday	Wednesday	Thursday	7 Days
From Manzanillo, Panama	Monday	Tuesday	Wednesday	Thursday	8 Days

- . Lift-On/Lift-Off Service
- . Fast Sea Transit Times
- . Overland Service to Inland Destinations in the United States of America, Costa Rica and Panama

# HOUSTON, TX NORTH CENTRAL AMERICA



## SOUTHBOUND

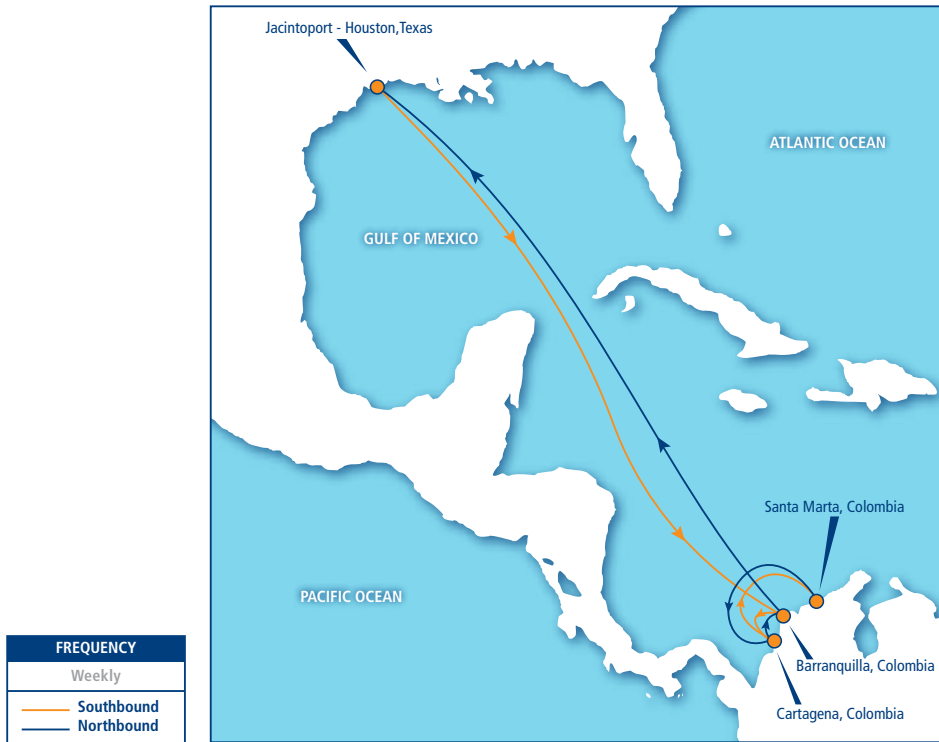
FROM HOUSTON, TEXAS	DELIVERY CUT-OFF	SAIL DAY	ARRIVAL	AVAILABLE	TOTAL TRANSIT TIME
To Puerto Cortes, Honduras	Thursday	Friday	Saturday	Saturday	8 Days
To Santo Tomas, Guatemala	Thursday	Friday	Sunday	Sunday	9 Days
To Managua, Nicaragua	Thursday	Friday	Sunday	Sunday	9 Days
To San Salvador, El Salvador	Thursday	Friday	Monday	Monday	10 Days

## NORTHBOUND

TO HOUSTON, TEXAS	DELIVERY CUT-OFF	SAIL DAY	ARRIVAL	AVAILABLE	TOTAL TRANSIT TIME
From Puerto Cortes, Honduras	Friday	Sunday	Wednesday	Thursday	3 Days
From Santo Tomas, Guatemala	Saturday	Sunday	Wednesday	Thursday	3 Days
From Managua, Nicaragua	Saturday	Sunday	Wednesday	Thursday	3 Days
From San Salvador, El Salvador	Friday	Sunday	Wednesday	Thursday	3 Days

- . Lift-On/Lift-Off Service
- . Fast Sea Transit Times
- . Overland Service to Inland Destinations in the United States of America, Costa Rica and Panama

# HOUSTON, TX COLOMBIA



## SOUTHBOUND

FROM HOUSTON, TEXAS	DELIVERY CUT-OFF	SAIL DAY	ARRIVAL	AVAILABLE	TOTAL TRANSIT TIME
To Barranquilla, Colombia	Thursday	Friday	Tuesday	Tuesday	11 Days
To Cartagena, Colombia	Thursday	Friday	Wednesday	Wednesday	12 Days
To Santa Marta, Colombia	Thursday	Friday	Thursday	Thursday	13 Days

## NORTHBOUND

TO HOUSTON, TEXAS	DELIVERY CUT-OFF	SAIL DAY	ARRIVAL	AVAILABLE	TOTAL TRANSIT TIME
From Santa Marta, Colombia	Wednesday	Thursday	Wednesday	Thursday	17 Days
From Cartagena, Colombia	Tuesday	Wednesday	Wednesday	Thursday	18 Days
From Barranquilla, Colombia	Monday	Tuesday	Wednesday	Thursday	19 Days

- . Lift-On/Lift-Off Service
- . Fast Sea Transit Times
- . Overland Service to Inland Destinations in the United States of America, Costa Rica and Panama

# NEW ORLEANS, LA NORTH CENTRAL AMERICA



## SOUTHBOUND

FROM NEW ORLEANS, LOUISIANA	DELIVERY CUT-OFF	SAIL DAY	ARRIVAL	AVAILABLE	TOTAL TRANSIT TIME
To Puerto Cortes, Honduras	Saturday	Sunday	Saturday	Saturday	6 Days
To Santo Tomas, Guatemala	Saturday	Sunday	Sunday	Sunday	7 Days
To Managua, Nicaragua	Saturday	Sunday	Sunday	Sunday	7 Days
To San Salvador, El Salvador	Saturday	Sunday	Monday	Monday	8 Days

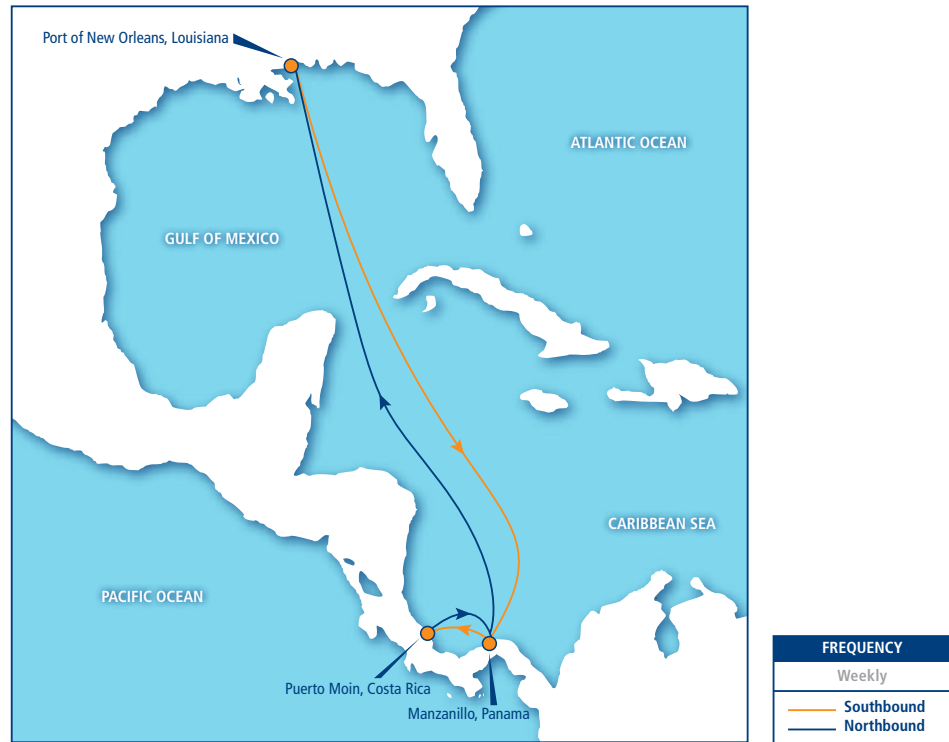
## NORTHBOUND

TO NEW ORLEANS, LOUISIANA	DELIVERY CUT-OFF	SAIL DAY	ARRIVAL	AVAILABLE	TOTAL TRANSIT TIME
From Puerto Cortes, Honduras	Friday	Sunday	Saturday	Monday	6 Days
From Santo Tomas, Guatemala	Saturday	Sunday	Saturday	Monday	6 Days
From Managua, Nicaragua	Saturday	Sunday	Saturday	Monday	6 Days
From San Salvador, El Salvador	Friday	Sunday	Saturday	Monday	6 Days

- . Lift-On/Lift-Off Service
- . Fast Sea Transit Times
- . Intermodal/Overland Services to/from cities in El Salvador, Guatemala, Honduras and Nicaragua

- . Through Service and Bills of Lading between other countries, ports and cities within the Seaboard Network

# NEW ORLEANS, LA SOUTH CENTRAL AMERICA



## SOUTHBOUND

FROM NEW ORLEANS, LOUISIANA	DELIVERY CUT-OFF	SAIL DAY	ARRIVAL	AVAILABLE	TOTAL TRANSIT TIME
To Manzanillo, Panama	Saturday	Sunday	Tuesday	Tuesday	9 Days
To Puerto Moin, Costa Rica	Saturday	Sunday	Wednesday	Wednesday	10 Days

## NORTHBOUND

TO NEW ORLEANS, LOUISIANA	DELIVERY CUT-OFF	SAIL DAY	ARRIVAL	AVAILABLE	TOTAL TRANSIT TIME
From Puerto Moin, Costa Rica	Tuesday	Wednesday	Saturday	Monday	10 Days
From Manzanillo, Panama	Monday	Tuesday	Saturday	Monday	11 Days

- . Lift-On/Lift-Off Service
- . Fast Sea Transit Times
- . Intermodal/Overland Service to Inland Destinations in the United States of America

# NEW ORLEANS, LA DOMINICAN REPUBLIC



FREQUENCY
Weekly
— Southbound
— Northbound

## SOUTHBOUND

FROM NEW ORLEANS, LOUISIANA	DELIVERY CUT-OFF	SAIL DAY	ARRIVAL	AVAILABLE	TOTAL TRANSIT TIME
To Rio Haina, Dominican Rep.	Saturday	Sunday	Tuesday	Tuesday	9 Days
To Puerto Plata, Dominican Rep.	Saturday	Sunday	Tuesday	Tuesday	9 Days

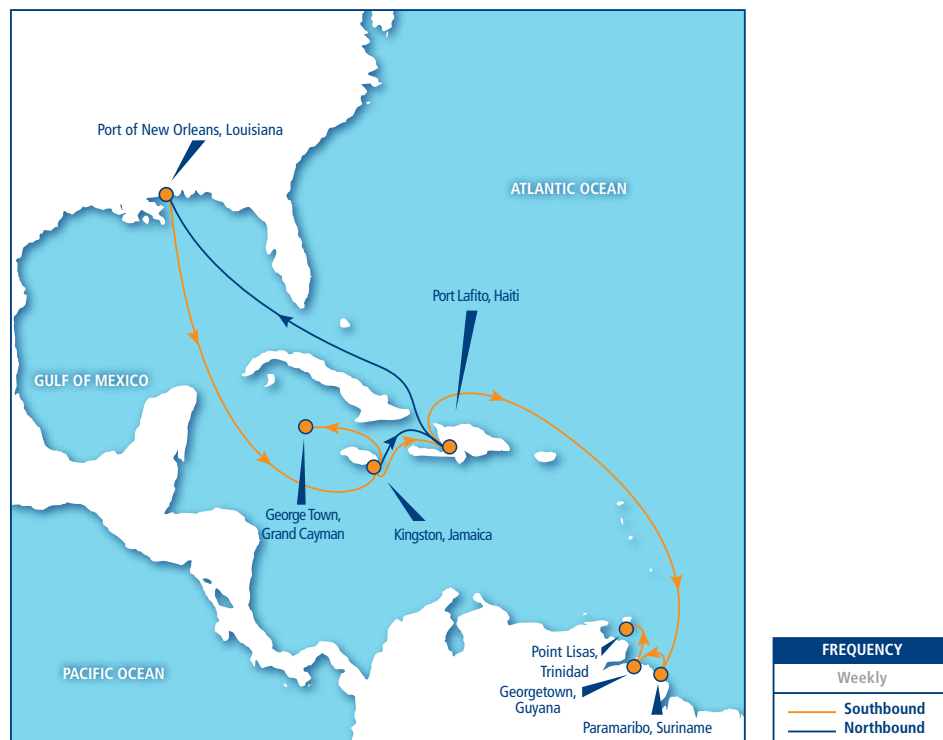
## NORTHBOUND

TO NEW ORLEANS, LOUISIANA	DELIVERY CUT-OFF	SAIL DAY	ARRIVAL	AVAILABLE	TOTAL TRANSIT TIME
From Rio Haina, Dominican Rep.	Monday	Tuesday	Saturday	Monday	18 Days

- . Lift-On/Lift-Off Service
- . Fast Sea Transit Times
- . Intermodal/Overland Service to Inland Destinations in the United States of America



# NEW ORLEANS, LA EASTERN CARIBBEAN



## SOUTHBOUND

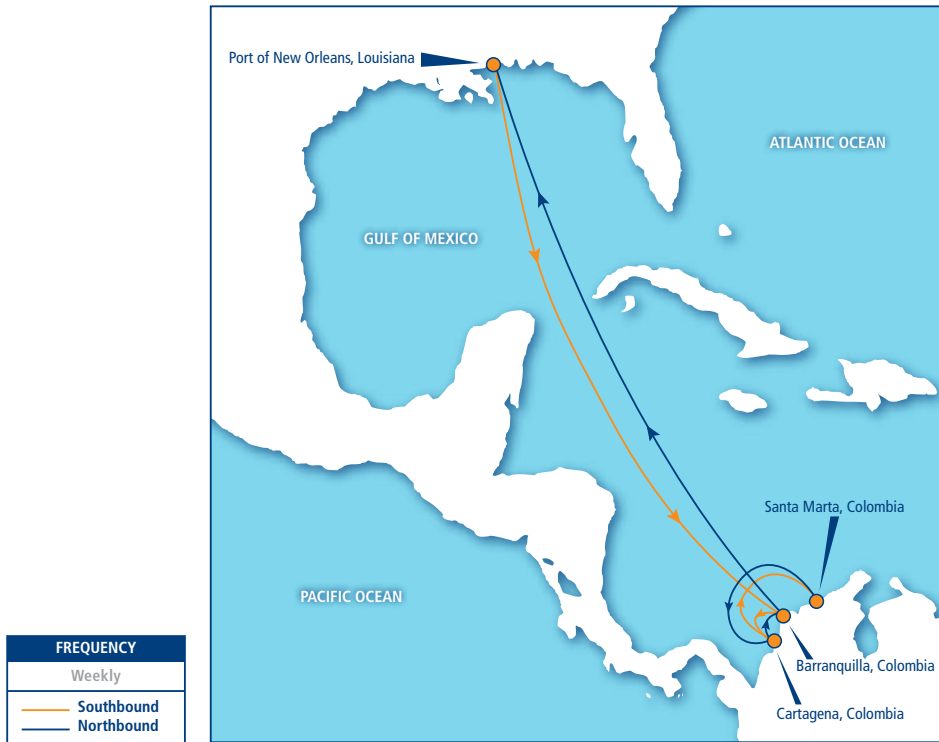
FROM NEW ORLEANS, LOUISIANA	DELIVERY CUT-OFF	SAIL DAY	ARRIVAL	AVAILABLE	TOTAL TRANSIT TIME
To Kingston, Jamaica	Saturday	Sunday	Wednesday	Thursday	3 Days
To Port Lafito, Haiti	Saturday	Sunday	Wednesday	Wednesday	10 Days
To George Town, Grand Cayman	Saturday	Sunday	Thursday	Thursday	11 Days
To Paramaribo, Suriname	Saturday	Sunday	Monday	Monday	15 Days
To Georgetown, Guyana	Saturday	Sunday	Tuesday	Tuesday	16 Days
To Point Lisas, Trinidad	Saturday	Sunday	Tuesday	Tuesday	16 Days

## NORTHBOUND

TO NEW ORLEANS, LOUISIANA	DELIVERY CUT-OFF	SAIL DAY	ARRIVAL	AVAILABLE	TOTAL TRANSIT TIME
From Kingston, Jamaica	Tuesday	Wednesday	Saturday	Monday	10 Days
From Port Lafito, Haiti	Tuesday	Wednesday	Saturday	Monday	17 Days

- . Lift-On/Lift-Off Service
- . Fast Sea Transit Times
- . Intermodal/Overland Service to Inland Destinations in the United States of America

# NEW ORLEANS, LA COLOMBIA



## SOUTHBOUND

FROM NEW ORLEANS, LOUISIANA	DELIVERY CUT-OFF	SAIL DAY	ARRIVAL	AVAILABLE	TOTAL TRANSIT TIME
To Barranquilla, Colombia	Saturday	Sunday	Tuesday	Tuesday	9 Days
To Cartagena, Colombia	Saturday	Sunday	Wednesday	Wednesday	10 Days
To Santa Marta, Colombia	Saturday	Sunday	Thursday	Thursday	11 Days

## NORTHBOUND

FROM NEW ORLEANS, LOUISIANA	DELIVERY CUT-OFF	SAIL DAY	ARRIVAL	AVAILABLE	TOTAL TRANSIT TIME
From Cartagena, Colombia	Tuesday	Wednesday	Saturday	Monday	17 Days
From Barranquilla, Colombia	Monday	Tuesday	Saturday	Monday	18 Days
From Santa Marta, Colombia	Wednesday	Thursday	Saturday	Monday	19 Days

- . Lift-On/Lift-Off Service
- . Fast Sea Transit Times
- . Overland Service to Inland Destinations in the United States of America, Costa Rica and Panama